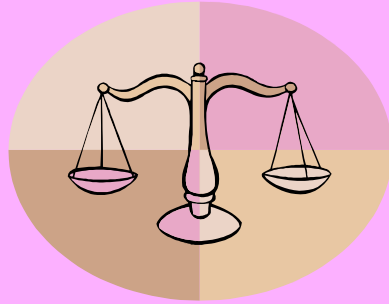


The Office of Health Care Quality Adult Medical Day Care Presentation

William Dorrill, Esq. Deputy Director
Cheryl Reddick, RN MSN, Program Administrator
Leon Carlton, Coordinator
Paula Boxley BSN, RN Investigator/Surveyor



William Dorrill, Esq. Deputy Director

Administrative Updates from OHCQ

OBJECTIVES OF PRESENTATION

- ▶ To ensure that the community is updated with the latest administrative updates from the Office of Health Care Quality.
- ▶ To allow the community to ask questions regarding any concerns they may have related to regulatory compliance.



ADMINISTRATIVE UPDATES

- ▶ Concepts of Adult Medical Day Care Regulation Changes 10.12.04



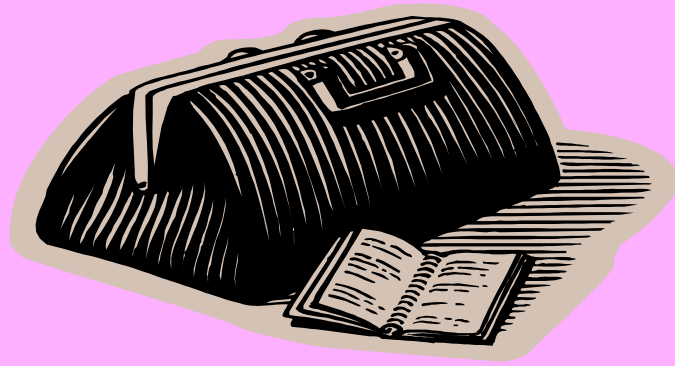
- ▶ Concept of Comprehensive Assessment/Adult Day Care Assessment and Planning System Guide (ADCAPS) Changes/Updates related to Medicaid Waiver





Leon Carlton, Coordinator

Administrative Updates



Paula Boxley BSN RN

Regulatory Updates
Answer to a Previous Question

ANSWER TO QUESTION

- ▶ OHCQ has an answer to the question proposed at the MADDs conference in May of 2010 related to:
 - ▶ (CMT) Certified Medication Technician or (CMA) Certified Medication Assistant
 - ▶ Working in an Adult Medical Day Care Setting with a Registered Nurse (RN) or Licensed Practical Nurse (LPN):



QUESTION

- ▶ Can a CMT or CMA work in AMDC under the supervision of an RN?
- ▶ Answer: Yes, with RN supervision per COMAR 10.27.09.03 I (2) (c) (iv), COMAR 10.27.11.04 (C), and 10.27.11.05 (H) (1) (g).



QUESTION

- ▶ Can a CMT or CMA work in AMDC under the supervision of an LPN?
- ▶ Answer: The LPN is not an independent nursing provider and must practice in a team relationship (see COMAR 10.27.10).
- ▶ The RN is the independent nursing care provider and is the leader of the nursing team with the LPN performing nursing assignments directed by the RN (COMAR 10.27.09.03 (I)).



ANSWER CONT

- ▶ The LPN can not independently make the determination to delegate medication administration to a CMT or CMA.
- ▶ COMAR 10.27.11.04 (C) The RN must assess the following factors to determine if medication administration can be delegated to a CMT or CMA to assure it is safe and appropriate for the CMT or CMA to administer medications.



ANSWER CONT

1. Assess the environment of the AMDC.
2. Assess the knowledge base and competency of the CMT or CMA to administer medication.
3. Assess each participant's clinical status to determine if the participant is chronic, stable, and predictable in response to care/medications.
4. Assess the medication treatment regime for each participant assessment.



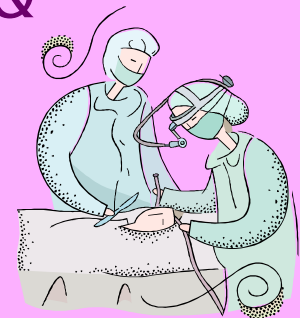
ANSWER CONT

5. Assess the aggregate AMDC population regarding the complexity and volume of medications to be administered by the CMT or CMA.
6. Assess the individual LPN's skills and competency to provide appropriate supervision of the CMT or CMA
7. Following the assessment of the identified factors the RN (as the leader of the nursing system and as the case manager) then determines the appropriateness of assigning the LPN to supervising the CMT or CMA.



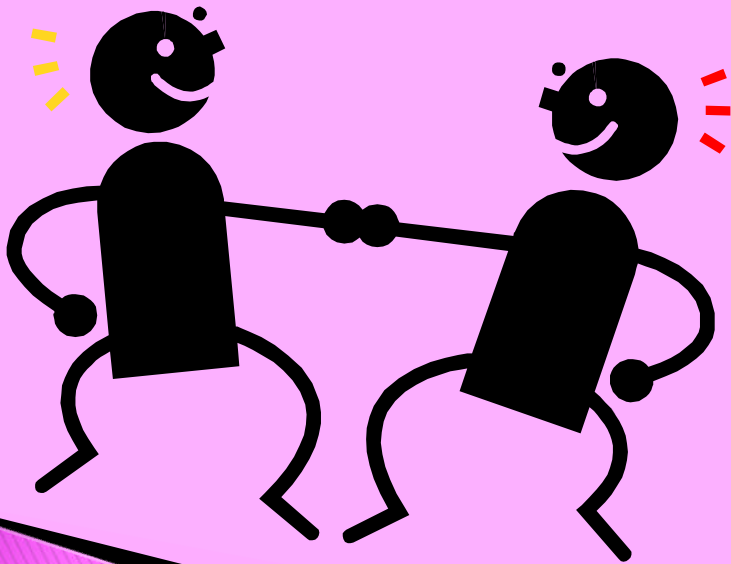
ANSWER CONT

8. Regularly evaluate the licensed nurse (LPN) who is performing the assigned nursing act.
9. Day to day supervision of a CMT or CMA by the LPN does not relieve the RN of the responsibility and accountability per COMAR 10.27.09 and COMAR 10.27.11 for medication management for the clients in the AMDC.
 - ▶ (Please Note MBON regulations include but not limited to COMAR 10.27.09;10.27.10; & 10.27.11)



QUESTIONS

Open Forum for Questions
from the Community to
OHCQ?



A still life arrangement of autumn harvest items including pumpkins, corn cobs, and apples on a bed of straw. The items are scattered across a thick layer of dry straw. In the center, a large orange pumpkin is prominent. To its left, a yellow corn cob with its husk partially removed is visible. In the foreground, several smaller pumpkins and red apples are scattered. The background is filled with more straw and some dried corn husks.

THE END

**On Behalf of the Office of
Health Care Quality We Thank
you for Your Invitation and
Your Participation**

HAPPY THANKSGIVING

CONTACT INFORMATION FOR OHCQ

William Dorrill Esq. Deputy Director
bdorrill@dhmh.state.md.us

Leon Carlton, Coordinator
lcarlton@dhmh.state.md.us

Paula Boxley BSN RN Investigator/Surveyor
pboxley@dhmh.state.md.us

Phone Number: (410) 402-8015

